

BUICK GMC

FACILITY IMAGE MERCHANDISING

Showroom, Service Lane & Brand Focused Merchandising



Click to visit gmdw.dcim.com to place your order today!

GM IN-DEALERSHIP DIGITAL NETWORK (IDDN)

GM IDDN provides dealers an impactful way to communicate with shoppers in your showroom, customer lounge and service write-up areas. Dealers are required to complete a site survey to determine the minimum requirements for digital signs in each of these areas. Please visit [EBEDigitalSignage](#) to view complete digital signage program guidelines, FAQs and enrollment sites for the three approved suppliers. Once you click on this link, you'll be asked to enter your GlobalConnect ID and Password, and enter "IDDN" in search bar. If you have any questions, please contact your Zone Team.

BUICK AND GMC BRAND LETTERS

BUICK GMC FACILITY IMAGE REQUIREMENT.

Item #806800054 Buick 3-Color 22" Shield Logo
Item #806800055 Buick Brand Letters
Overall dimensions: 9' 10-1/4" wide x 22" high
Logo only: 22" diameter
Letters only: 7' 2-1/2" wide x 11-3/8" high

Item #806800056 GMC Brand Letters
5' 3-3/4" wide x 11-3/8" high x 1" deep

GMC Brand Letters have been updated to include the red GMC color which replaces the previous silver wall letters.

A 3-color Tri-Shield Logo and Buick Brand Letters are required to replace existing wall letters. The Buick logo and letters also need to be separated from the GMC Brand Letters with equal spacing between logos and wall corners.



BUICK LOGO SCREEN LOGO

BUICK GMC FACILITY IMAGE REQUIREMENT.

Item #806800004

A 3-color Tri-Shield 17" Buick logo is required to replace the existing silver logo on the Buick Logo Screen in your showroom. Includes hanging bracket to attach to existing Buick Logo Screen.



GMC LOGO SCREEN LOGO

BUICK GMC FACILITY IMAGE REQUIREMENT.

Item #806800005

A GMC logo is required to replace the existing GMC Logo Screen Logo. Includes hanging bracket to attach to existing GMC Logo Screen.

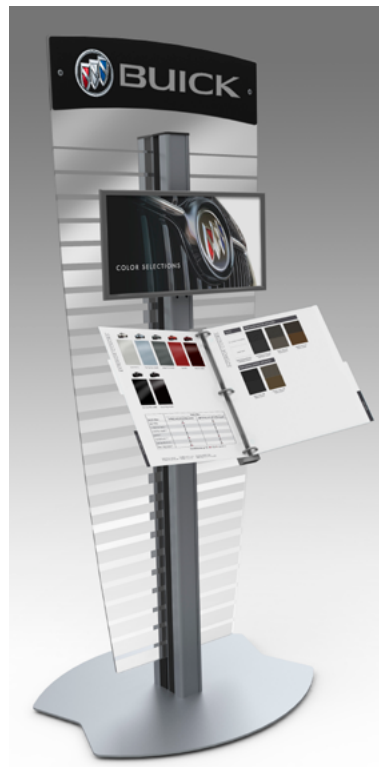


PRODUCT INFORMATION CENTER HEADER PANELS

BUICK GMC FACILITY IMAGE REQUIREMENT.

- Item #800385101BG Buick and GMC headers
- Item #800385102B Buick on both sides
- Item #800385103G GMC on both sides

Updated Buick and GMC header panels that reflect the most current Buick and GMC logos are required on all Product Information Center displays. Contact Program Headquarters at 1-800-766-5660 to confirm that you have the most current versions.



EXTERIOR LOT PAVEMENT MARKING STENCILS

BUICK GMC FACILITY IMAGE REQUIREMENT.

Item #806603009

Navigating customers to your service lane with clear directional signage and pavement markings reduces anxiety and frustration for your customers. Pavement marking stencils are available to help you create a clear path to your entrance. Each stencil includes a standard 7.6" lane line and 44" w x 33.5" h chevron. Stencils are ~3/8"-thick Styrene for optimal durability. Lane line is ~36" in length.

Note: Dealer is responsible for application of paint using local contractor.



EXTERIOR DIRECTIONAL LANE LIGHTS

BUICK GMC FACILITY IMAGE REQUIREMENT.

Item #806603001 12" x 12" Directional Lane Light

Item #806603002 18" x 18" Directional Lane Light

LED entrance lights direct customers to open lanes and give dealers the ability to open and close lanes depending on traffic requirements.

- Available in 2 square sizes: 12" and 18"
- Includes 5-year warranty
- Includes single- or multi-switch panel depending on number of lights ordered. Recommend 1 light per service lane.

Note: Dealer is responsible for electrical installation which must comply with local code.



SERVICE BRAND LETTERS

BUICK GMC FACILITY IMAGE REQUIREMENT.

- Item #806800054 Buick 3-Color 22" Shield Logo**
- Item #806800055 Buick Brand Letters**
Overall dimensions: 9' 10-1/4" wide x 22" high
Logo only: 22" diameter
Letters only: 7' 2-1/2" wide x 11-3/8" high
- Item #806800056 GMC Brand Letters**
5' 3-3/4" wide x 11-3/8" high x 1" deep

The same Buick and GMC dimensional brand letters for the showroom also can be used for the back wall of the service lane (behind the desks or podiums).

1/2 SIZE BUICK AND GMC BRAND LETTERS

- Item #806800057 Buick Brand Letters 48"**
- Item #806800059 Buick 2-Color 11" Shield Logo**
Overall dimensions: 5' 3/4" wide x 11" high
Logo only: 11" diameter
Letters only: 3' 8-1/2" wide x 8-3/4" high
- Item #806800058 GMC Brand Letters 32"**
32-3/4" wide x 5-7/8" high x 1" deep

For dealerships with limited space in the service area, 1/2 size Buick and GMC wall logos are now available.



Service Advisor write-up stations shown with 1/2 size wall letters and 48" digital menu boards

SERVICE ADVISOR DESK ARTICULATING MONITOR ARM

MEETS REQUIREMENT FOR TRANSPARENCY.

Item #806603066

One of the new requirements at the service write-up desk is transparency. Although there are several ways to meet this requirement, an articulating monitor arm is one easy option. The monitor arm allows service advisors to conveniently share their computer screen with customers to provide accuracy and transparency.

- Mounts to desk top or clamps to counter edge
- Holds 13" - 27" monitors with maximum weight of 19 pounds
- Full motion and Vesa compatible



CHARGING PEDESTAL

MEETS REQUIREMENT FOR CHARGING PROVISION.

Item #806603258 Black Charging Pedestal
Item #806603257 Silver Charging Pedestal

One way to meet your facility requirement for charging amenities in the customer lounge is with the portable charging pedestal. It allows customers to charge their phones or computer devices while comfortably seated in your lounge.

- Available in black or silver
- 3 electrical outlets
- 2 USB ports
- Commercial grade steel construction
- Plugs into standard 120-volt outlet
- 4" deep shelf to hold phone or tablet
- 4-5/8" h x 5-7/8" w sign to inform customers of charging amenity
- Overall dimensions with sign and shelf: 38" high with 12" diameter base



5-WHEEL RIM MOBILE ACCESSORIES DISPLAY

REQUIRED FOR NEW FACILITY RENOVATIONS.

Item #802404629

Overall size: 86" high x 48" wide x 43" deep

This 5-wheel merchandising display is designed for use with your Buick/GMC accessories slat wall and replaces the previous 2-sided slat wall accessories display (a Facility Image requirement). Constructed with a durable steel frame and powder coated to match existing Facility Image fixtures, it features:

- 5 fixed mounting brackets and studs to hold 22" rims
- 25 additional studs to display all lug nuts on each wheel (*Note: wheels and lug nuts are not included with the display and must be ordered separately from your accessories distributor*)
- Locking casters to hold display in place when in the showroom and make mobility easy when traveling to local events
- 5 acrylic graphic holders to provide features, benefits and pricing details for each wheel
- Meets Facility Image requirement for mobile accessories wheel display



MOBILE TIRE, BATTERY AND WIPER DISPLAY

Item #806603086B Buick

Item #806603086G GMC

For dealers with limited wall space a 2-sided mobile display is available. Includes brackets, hanging rods to display product, and promotional tire inserts (dealers must provide batteries and wipers).



MOBILE TIRE MERCHANDISING DISPLAY

FOR CUSTOMER LOUNGE

Item #806603035B Buick

Item #806603035G GMC

For dealers with limited wall space in their customer lounge, a mobile floor display is also available.



WALL-MOUNTED TIRE MERCHANDISING DISPLAY

FOR CUSTOMER LOUNGE

Item #806603033B Buick

Item #806603033G GMC

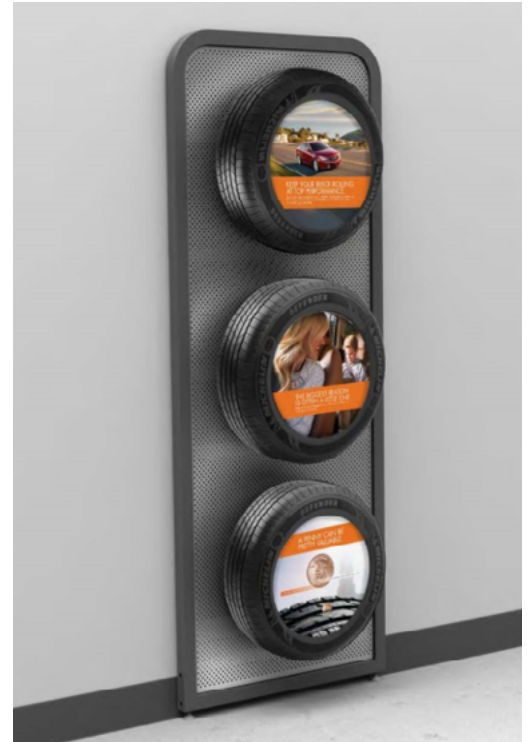
This durable steel frame display with perforated steel panel is designed to educate customers about tire wear. Display includes poster frame, poster, 1 tire bracket and insert (dealer must provide 16" tire).



WALL-MOUNTED IN-LANE TIRE DISPLAY

Item #806603028B Buick
Item #806603028G GMC

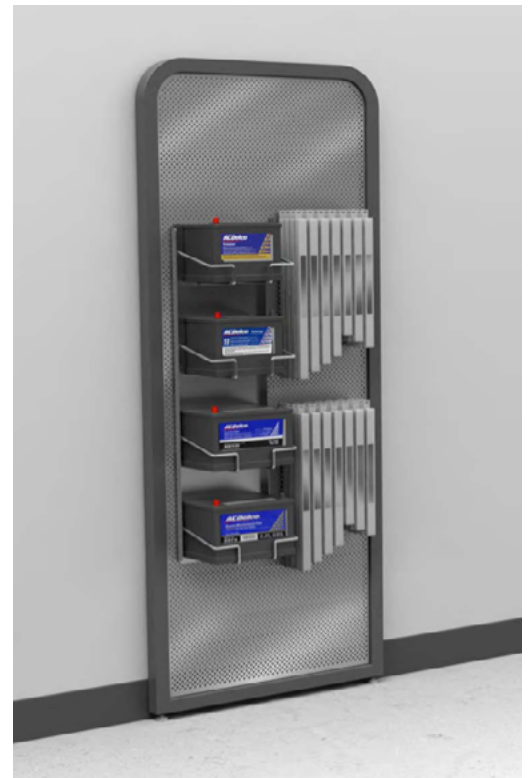
Designed to build awareness and promote the sale of tires in your service lane, these durable steel frame fixtures hold three 16" tires and include promotional tire inserts.



WALL-MOUNTED BATTERY AND WIPER DISPLAY

Item #806603165

Durable Steel frame and perforated panel display is designed to hold batteries and wipers to create awareness in your service lane. Includes brackets and hanging rods to display product (dealers must provide batteries and wipers).



MODULAR TIRE DISPLAY

Selling tires is an important part of your service operation and your customers have plenty of options when considering new tires. An effective communication strategy to educate your customers about tire wear and the value of original equipment tires can help you reach your sales goals. This new display is designed to:

- Build Awareness that your dealership is the best place to purchase tires
- Educate customers about tire wear and the importance of selecting the right tire for their vehicle
- Organize a wide selection of tires in an efficient manner that enhances the facility appearance and cleanliness and reduces the need for unsightly tire stacks
- Promote your dealership pricing with customizable inserts and the GM Tire Price Match Guarantee



MODULAR TIRE DISPLAY

MODULAR DESIGN TO FIT YOUR SERVICE LANE

Your dealership is unique and the space available for tire displays may be limited or substantial. This new display is designed to provide options that meet your needs.

The minimum tire display includes a right, left and center section to hold:



Six tires & Tire Wear Graphic OR
Item #806603328



Nine Tires without Graphic
Item #806603327



The display can expand as needed by
adding additional center sections
Item #806603329

DIMENSIONS:

The Six Tires w/graphic and the 9 Tires measures: 106" H x 104" W (outside frame) x 6" D

Each add-on section measures: 106" H x 34" W x 6" D

Tire brackets hold tires ranging from 15"-20"

CERTIFIED SERVICE TIRE CENTER WALL LETTERS

Item #804135104

To help identify your tire display, a set of wall letters is available. The letters help call attention to the tire display and invite customers to take a closer look to learn more.

CERTIFIED SERVICE TIRE CENTER



TIRE INSERT OPTIONS

- Item #806603330 Buick 15"-16" Set of 5
- Item #806603331 Buick 17"-18" Set of 5
- Item #806603332 Buick 19"-20" Set of 5
- Item #806603333 GMC 15"-16" Set of 5
- Item #806603334 GMC 17"-18" Set of 5
- Item #806603335 GMC 19"-20" Set of 5

Tire inserts are available with pre-printed branded messages to communicate various tire features, tire wear indicators and the GM Tire Price Match Guarantee. New, customizable tire inserts allow you to identify tires for specific vehicles with your dealership pricing. Tire inserts are available in 3 sizes: 15"-16", 17"-18", and 19"-20".

BUICK BRANDED TIRE INSERTS

Set of 5 Buick Tire Inserts



GMC BRANDED TIRE INSERTS

Set of 5 GMC Tire Inserts



Note: Tire Insert copy and graphics are subject to change without notice. Please refer to gmdw.dcim.com for latest versions or call 1-800-766-5660 if you have any questions.

TIRE INSERT OPTIONS

Item #806603336	Buick 15"-16" Custom Inserts
Item #806603337	Buick 17"-18" Custom Inserts
Item #806603338	Buick 19"-20" Custom Inserts
Item #806603339	GMC 15"-16" Custom Inserts
Item #806603340	GMC 17"-18" Custom Inserts
Item #806603341	GMC 19"-20" Custom Inserts
Item #806603325	Vehicle Name Inserts Set of 17
Item #806603326	Printed Numbers & Word Set

BUICK CUSTOMIZED TIRE INSERTS

The customized inserts include two graphic holders to allow dealers to customize by:

THE VEHICLE NAME (12" wide x 2" high channel)

A set of Buick vehicle names are sold as a set

Current set includes: Encore, Encore GX, Enclave, Envision

PRICE (12" wide x 4" high channel)

A set of numbers and words that can be used to show your special dealer pricing.

Numbers include: 3-\$, 4 sets of "0-9" numerals, 4 blanks and the following word sets to go along with the pricing: "Each", "Set of Four", "With Mail-in Rebate", "Good", "Better", "Best"



GMC CUSTOMIZED TIRE INSERTS

The customized inserts include two graphic holders to allow dealers to customize by:

THE VEHICLE NAME (12" wide x 2" high channel)

A set of GMC vehicle names are sold as a set

Current set includes: Acadia, Terrain, Yukon, Yukon XL, Canyon, Sierra 1500, Sierra 2500 HD, Sierra 3500 HD, Savana

PRICE (12" wide x 4" high channel)

A set of numbers and words that can be used to show your special dealer pricing.

Numbers include: 3-\$, 4 sets of "0-9" numerals, 4 blanks and the following word sets to go along with the pricing: "Each", "Set of Four", "With Mail-in Rebate", "Good", "Better", "Best"



THE FOLLOWING ELEMENTS ARE REQUIRED FOR DEALERS WHO ARE UNDERTAKING A COMPLETE FACILITY IMAGE RENOVATION.

RECEPTION DESK AND BACK WALL

BUICK GMC FACILITY IMAGE REQUIREMENT

- Item #802404206 Back Wall
- Item #802404141 Reception Desk

Formaldehyde-free, laminated wood construction with bi-level laminate top. Laminated wood and Plexiglas® back wall with dealership name. Includes ADA compliant guest counter on front side of standard and large reception desks.

Overall sizes:

- Back Wall: 156" wide x 102" high x 22" deep
- Reception Desk: 101" wide x 42" high x 45" deep
- Large Desk: 166" wide x 42" high x 45" deep

Note: The Back Wall requires assembly and installation which is not included in the unit price. Please contact DCI for an installation quotation if desired. Professional installation highly recommended.



BUICK - GMC LOGO SCREENS

BUICK GMC FACILITY IMAGE REQUIREMENT.

- Item #802404137 Center Screen
36" wide x 93" high x 1" deep (each screen)

Powder-coated steel frame with 1" diameter crossbars and dimensional logos. One logo screen with logo is required for each division represented. Screens attach permanently to the floor and wall.

BUICK - GMC LOGOS FOR LOGO SCREEN

BUICK GMC FACILITY IMAGE REQUIREMENT.

- Item #806800004 Buick
17" wide x 17" high x 1.25" deep
- Item #806800005 GMC
23.625" wide x 5.25" high x 1.25" deep

Dealers will need to purchase logos for logo screens separately. These logos easily attach to screen with supplied hanging hardware kit. Dealers are required to have logos that match the brands their dealership offers.



PRODUCT INFORMATION CENTER

BUICK GMC FACILITY IMAGE REQUIREMENT

- Item #800385101BG Buick GMC Dual Color & Trim Display
- Item #800385102B Buick with Literature Holder
- Item #800385103G GMC with Literature Holder

- Small footprint: 47" wide (at base) x 84" high x 34.5" deep (at base)
- Buick and GMC PIC pages sold separately
- Includes 1 Page Deck to hold 1 set of PIC pages

Note: Brochure Rack, PIC pages, and Second Deck sold separately. Buick and GMC Dealers are required to have either a PIC with a second deck or (2) separate PICs. Buick only or GMC Only Dealers may purchase only (1) PIC.



LITERATURE STAND

Item #804135077
26" wide x 57" high x 18" deep

2-sided unit with 12 literature pockets on each side.
Pockets have open sides to fit various brochure sizes.



ACCESSORIES SLATWALL

BUICK GMC FACILITY IMAGE REQUIREMENT
(FOR GM ACCESSORIES ONLY).

Item #802404085

Overall size: 99.5" wide x 60.5" high

Laminated wood panel with 3" aluminum inserts to hold Buick and GMC accessories. Mounts to wall with four French cleats. Accessories hardware sold separately.

Note: Not recommended for hanging vehicle wheels. The Mobile Accessories Display is designed for wheels.



ACCESSORIES HANGING HARDWARE KIT

Item #804135100

Kit includes the following:

- Four 4" chrome peg hooks (Item # 804135006)
 - Four 8" chrome peg hooks (Item # 804135007)
 - Two floor mat hangers (Item # 804135009)
 - Two splash guard brackets (Item # 804135010)
 - One license plate holder (Item # 804135011)
 - One waterfall bracket (Item # 804135008)
 - One brochure holder (Item #804135012)
- Hanging hardware also sold individually*

ACCESSORIES WALL LETTERS

Item #804135019

Overall size: 54" wide x 5" high

2" thick dimensional wall letters to identify the accessories selling area in your dealership. Designed for placement above the accessories slatwall.

ACCESSORIES SLATWALL PRICING HOLDERS

Item #804135069

Set of six price holders for slatwall. Dealer must provide printed pricing information.

LARGE ACCESSORIES DISPLAY CASE

Item #804135074

40" wide x 73" high x 20" deep

Laminated wood structure with tempered glass windows, sliding glass doors with lock and 4 adjustable glass shelves. Also includes four overhead lights.



TROPHY CASE

Item #804135076

25" wide x 75" high x 23" deep

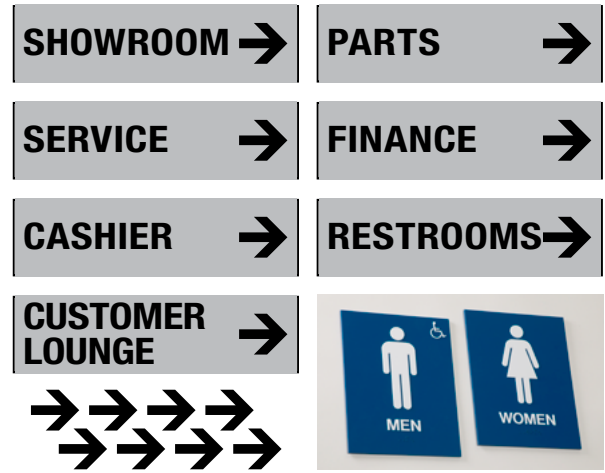
Glass display case to hold dealership awards and showcase community involvement. Includes locking glass doors, overhead lighting and 3 adjustable shelves.

INTERIOR DIRECTIONAL SIGNS

Item #802404013

Size of each sign: 12" wide x 3.25" high

Set of 7 brushed aluminum sign panels screened in black ink with the following copy: Showroom, Service, Cashier, Customer Lounge, Parts, Finance and Restrooms. Plus, two ADA-approved 6" x 8" restroom signs. Also included are 8 directional arrows that can be applied as needed to each sign.



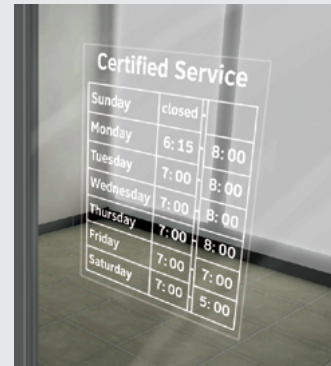
HOURS OF OPERATION SIGN

BUICK GMC FACILITY IMAGE REQUIREMENT.

Item #804715013

Overall size: 12.25" wide x 13.5" high

White lettering on clear vinyl with assortment of numbers to customize your service hours.



KEY DROP BOX

BUICK GMC FACILITY IMAGE REQUIREMENT.

Item #804715015

Overall size: 17.5" wide x 18.5" high x 4.25" deep

Steel box with hinged door. Mounts to exterior of building.



MODULAR SERVICE ADVISOR DESK

BUICK GMC FACILITY IMAGE REQUIREMENT.

Item #804715007

36" wide x 45" high (customer counter) x
36" high (advisor counter) x 36" deep

A modular desk system has been designed to provide the utility and flexibility to meet a variety of service lane requirements.

Fully functional for use independently or with additional components. The desk includes the following features:

- Pencil drawer
- Locked storage cabinet (9" x 9") for small purse or valuables
- PC cubby
- 2 adjustable shelves
- Access panel and wiring grommets (two on countertop) for convenient wiring of PC and phone
- Weatherized bottom shelf protection to minimize damage from dirt and snow on advisor's shoes or boots
- Heavy-duty levelers with 2" rise for counter adjustment and alignment on uneven floors
- Solid surface customer counter



BUICK GMC SERVICE DESK EXTENSION WITH FILE CABINET

Item #804715008

18" wide x 33" high x 28" deep

Features include:

- Hardware to attach cabinet to right or left side of desk
- 2 drawers with standard file hangers
- Access panel and wiring grommets for telephone or electrical cords



CONNECTION CENTER

Connection Centers offer us a unique opportunity to engage with our customers everyday. Our technology has grown over the past few years and will continue to grow as it is already a major reason for purchase. Technology has enabled us to connect with our customers throughout their entire ownership life-cycle and makes them feel more aligned with our brands than ever before in the history of our organization. We look forward to continuing this partnership and becoming a recognized global leader for customer experience.

BUICK GMC CONNECTION CENTER

Item #802404163

CONNECTION CENTER WALL LETTERS

Item #804135180

CONNECTION CENTER WALL SIGN

Item #804135181

Dimensions: 30" x 6.3" high



What is a Connection Center?

A dedicated area where customers can receive tech support. Examples: Bluetooth®, Navigation, OnStar, apps, and more ...

Why is this beneficial to my customers?

"I can't learn everything at delivery. I'd rather come back later to review my vehicle's tech with you."

How does this impact my dealership experience?

The addition of a Connection Center can favorably impact CSI, DMN, Retention, Loyalty, OnStar and much more ...

What tools and resources do I need?

You'll need a tablet device, wireless Internet access, and a flatscreen TV with Google TV and Apple TV applications.

Who can help me get this set up?

Your local Connected Customer Specialist is actively working with you to implement Connection Centers. If you want to purchase furniture, please contact your CCS and Zone Manager.

Is this a requirement?

Connection Center is NOT a Facility Image program requirement.

BUICK GMC EXTERIOR TOWER SIGN

Item #806603186 – Exterior Tower Sign Base with Frame (no graphics)

Item #806603048 – Set of 6 Arrows - Black

Item #806603049 – Set of 6 Arrows - White

BUICK GRAPHIC PANELS

Item #806603191 – Buick “Welcome. Please Drive In.”

Item #806603192 – Buick “Please Pull Ahead.”

Item #806603193 – Buick “Not an Entrance.”

Item #806603194 – Buick “Certified Service” w/ Arrow

Item #806603281 – Buick “Thank You. Have a Great Ride.”

Item #806603282 – Buick “Welcome. Your Service Advisor is Waiting for You at the Service Desk.”

Item #806603283 – Buick “Welcome. Your Advisor Will be Right With You.”

Item #806603251 – Buick “Express Service. Oil Change, Tire Rotation, Car Wash”

Item #806603252 – Buick “Express Service. Oil Change, Tire Rotation”

GMC GRAPHIC PANELS

Item #806603195 – GMC “Welcome. Please Drive In.”

Item #806603196 – GMC “Please Pull Ahead.” Graphic Panel

Item #806603197 – GMC “Not an Entrance.”

Item #806603198 – GMC “Certified Service” w/ Arrow

Item #806603253 – GMC “Express Service. Oil Change, Tire Rotation, Car Wash”

Item #806603254 – GMC “Express Service. Oil Change, Tire Rotation”

Item #806603284 – GMC “Welcome. Your Service Advisor Will Meet You at Your Vehicle.”

Item #806603285 – GMC “Welcome. Please See Your Advisor.”

Item #806603286 – GMC “Thank you for Choosing Professional Grade Service.”



The Entrance Tower Sign is recommended for placement on the exterior lot to guide customers to your service entrance. This new taller sign can be easily seen by drivers in any size vehicle and is built to withstand weathering and movement around the exterior lot.

Features:

- Heavy concrete base with powder coated aluminum cover
- Anodized aluminum frame to hold 1 or 2 single-sided graphic panels
- Graphics sold separately
- Built in rubber wheels for easy movement
- Overall size: 66" high x 30" wide
- Graphic size: 60" high x 23.5" wide
- 3-year weather resistance warranty

CERTIFIED SERVICE PARKING SIGN

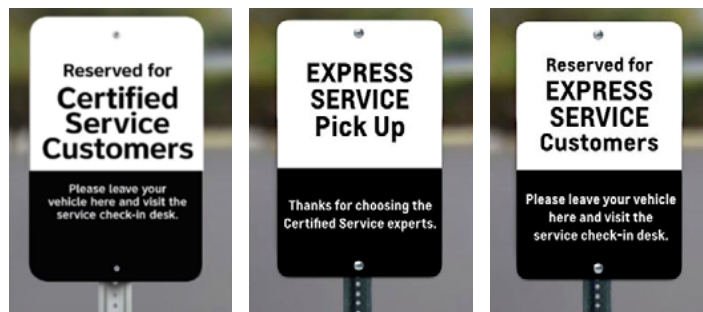
Item #806603011

EXPRESS SERVICE PICKUP SIGN

Item #806603044

EXPRESS SERVICE PARKING SIGN

Item #806603045



Click to visit gmdw.dcim.com to place your order today!